

## ► Overview

This high performance End Launch Connector is designed for 0.8mm connector with low VSWR. It is easy to connect PCB, microstrip and coplanar lines.

## ► Feature

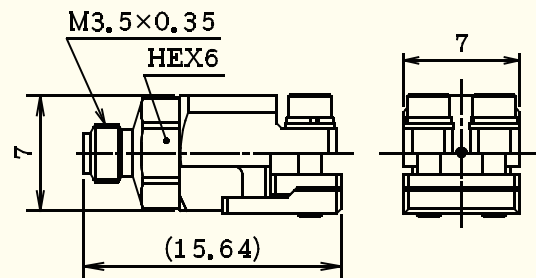
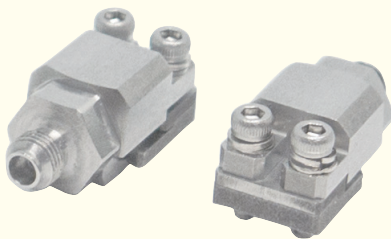
- DC to 145GHz high frequency PCB mounting connector.
- Solderless easy mounting with hex screws, easy repair and fast applying.
- PCB thickness 0.127mm to 1.6mm.

## ► Applications

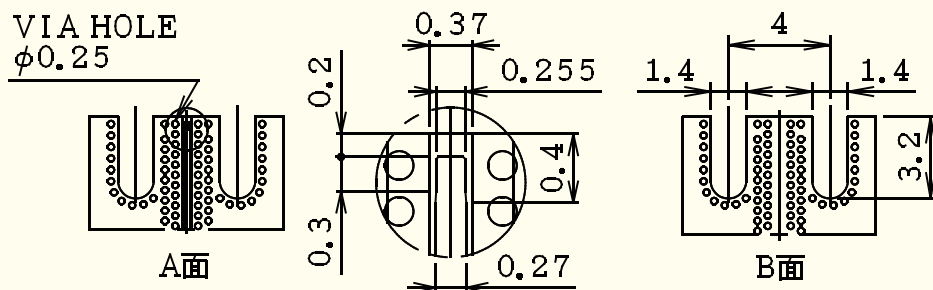
High frequency measurement, Connections of high speed data-communication devices, optical component, and millimeter wave device and modules.

## ► Product

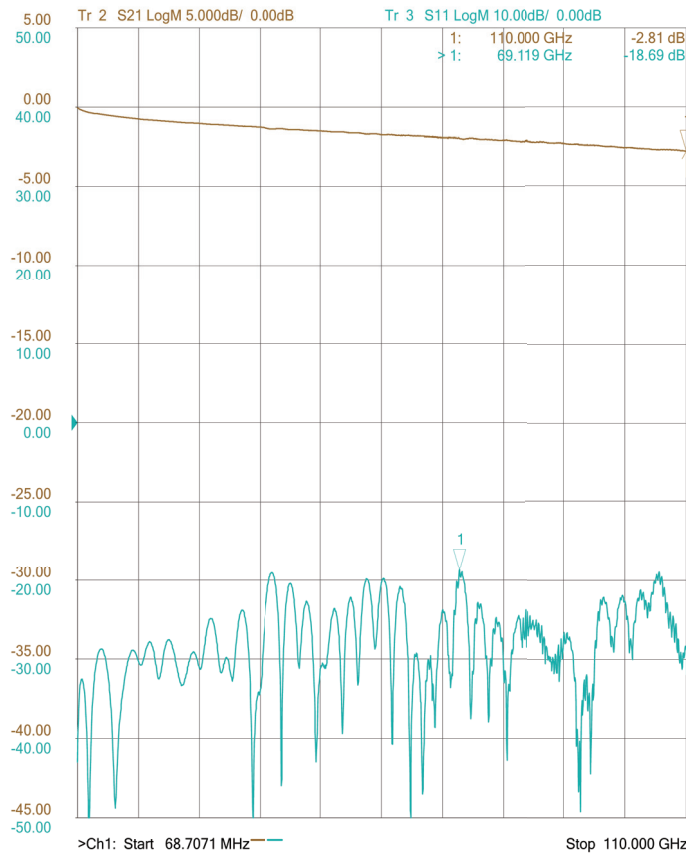
**Product Code : 01R0520-00**



## Dimension



► Reference data



Measurement conditions  
 Frequency Range: 10MHz to 110GHz,  
 110GHz to 145GHz  
 Calibrated with 0.8mm connector

PCB Conditions  
 Rogers RT/duroid 5880  
 Grounded Coplanar Line  
 Thickness: 0.127mm  
 Copper Foil: 15  $\mu$ m  
 Signal Line: 25.4mm

